

# *Installation Overview*

**GFI LanGuard®**

---

*Prepared by the Product Management Team at New Boundary Technologies in June 2013 for the launch of GFI LanGuard 2012.*

**Contact us today!**

*New Boundary Technologies  
3433 Broadway Street N.E., Suite 150  
Minneapolis, MN 55413  
United States  
Phone: 612-379-3805*

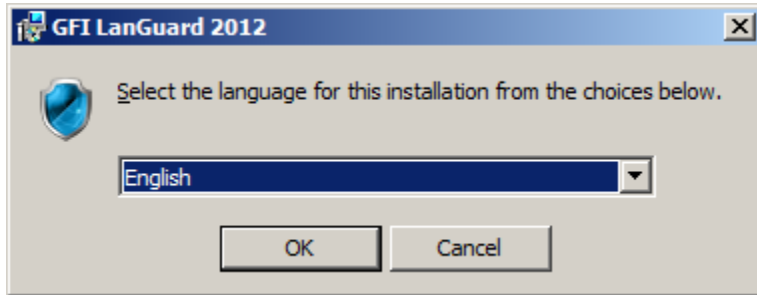
[info@newboundary.com](mailto:info@newboundary.com) / [www.newboundary.com](http://www.newboundary.com)



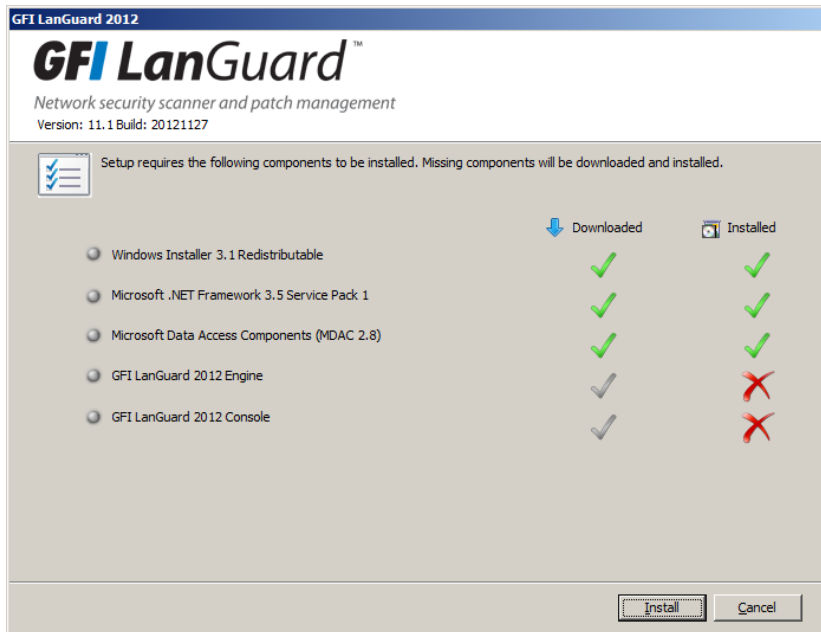
### Installation Overview of GFI LanGuard® 2012 with Screenshots

We have taken a number of screen shots to assist in the basic installation of GFI LanGuard 2012. For more information on typical configurations for GFI LanGuard 2012, please refer to the [Installation and Setup Guide](#).

When Launching the GFI LanGuard 2012 installation, select your language of choice (English, German, or Italian).



The installer then checks installation requirements for GFI LanGuard 2012. Note that Windows Installer 3.1, Microsoft .NET Framework 3.5 SP1, and MDAC 2.8 are required prior to the install. The installer for GFI LanGuard 2012 can assist you with this if you haven't already installed them.



GFI LanGuard 2012 will then install the GFI LanGuard 2012 Engine and Console separately.



When the installer starts to install the Console, you will see a separate Install Wizard to walk through.



You will need to agree to the GFI LanGuard 2012 EULA for the installation to continue.



Next you'll want to fill out User Name, Company Name, and purchased License Key (if you have one). If you are evaluating and you don't have a License Key, you will be able to enter one later if and when you purchase. By default the evaluation of GFI LanGuard 2012 is for 5 IP addresses for 30 days.

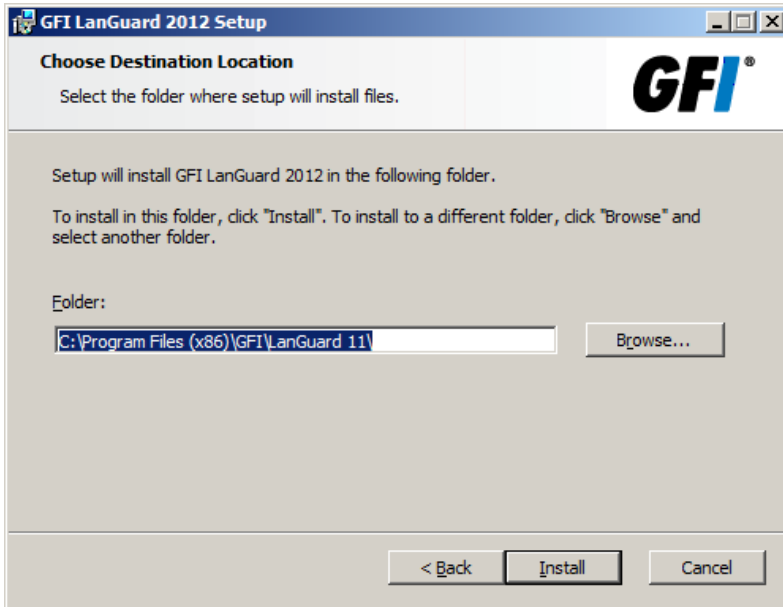


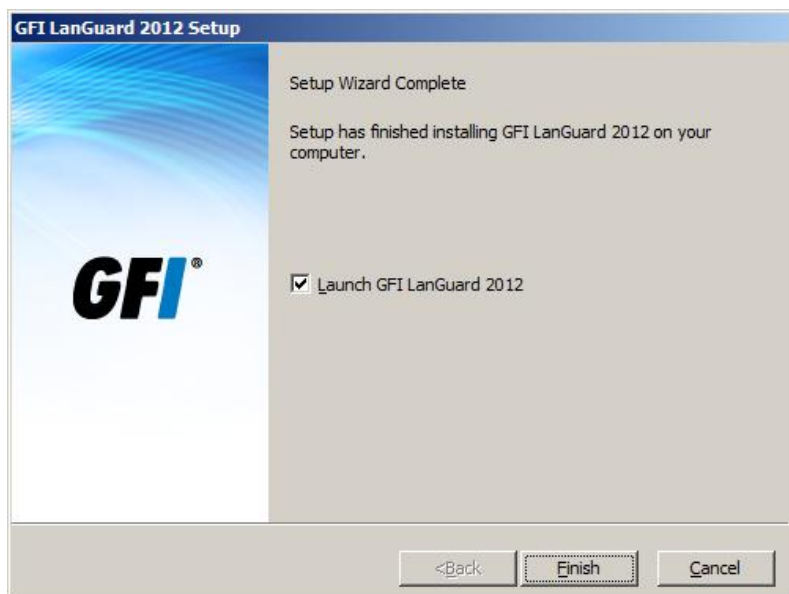
Next you need to supply an Administrator level account (service account) for your domain.



*If you have more than one domain to manage, we'll cover that in another document.*

*Next choose the location where you want the product installed.*





*You are now finished with the basic installation of GFI LanGuard 2012. If you have further questions about the basic install of LanGuard 2012, please call or email New Boundary Technologies Technical Support Staff at 612-379-1851 or [support@newboundary.com](mailto:support@newboundary.com)*